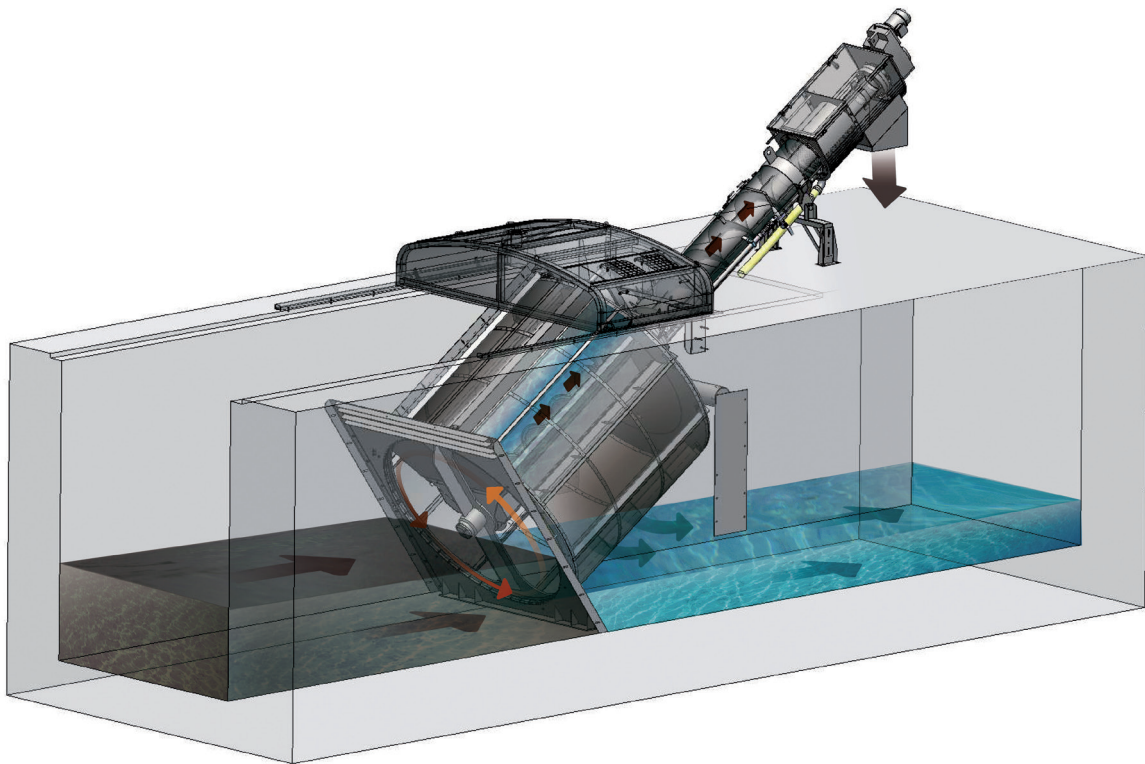


MEVA MDS

Drum Sieve in Stainless Steel



Main areas of use and features

- Unique drum seal for maximal separation
- Unique maintenance-free bottom bearing
- Integrated screenings handling
- Easily accessible pressing zone
- Openings between 0.5 and 10 mm
- Installation in channel or tank
- Well suited for installation upstream membranes

MDS MEVA DRUM SIEVE

Area of use

The Meva MDS is a state-of-the-art drum sieve particularly well suited for applications requiring a high separation degree. The drum sieve is designed for use in municipal pretreatment and upstream membranes, but can also be used in industrial applications.

The unique drum seal was developed in cooperation with a leading membrane manufacturer. It prevents hair and other fibres – which could otherwise damage the downstream membrane – from passing through the sieve.

Meva MDS is insensitive to sand and has a unique bottom made of bronze that requires no lubrication or flushing. There is consequently very little need for maintenance on the lower part of the sieve drum. Meva MDS is fully hygienically capsulated and is available with perforated plate, wedge wire and mesh versions for openings from 0.5 mm to 10 mm.

Function

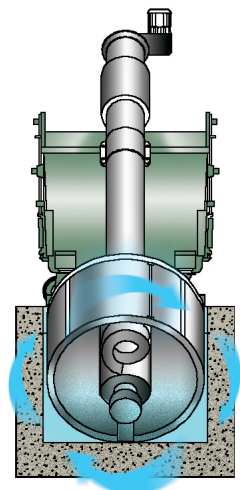
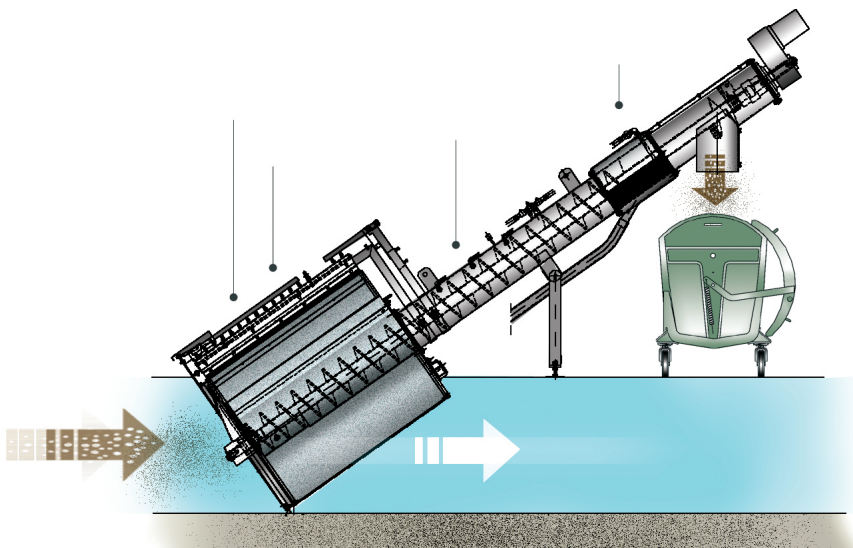
Incoming upstream flows are led into the open short side of the drum. Screenings and other material are caught on the inside of the drum. The drum acts as a barrier which collects all screenings on one side, thus producing a “clean” side downstream the drum. This in turn leads to a very high separation degree. The separated screenings are transported up from the water by the drum’s rotation, which is generated

by the drum being mounted directly to the transport screw. The bearing has a unique design that requires very little maintenance. The drum’s position is further reinforced by strong rollers placed along its upper edge.

A spray bar on the outside of the drum flushes screenings from the filter surface. The screenings drop into a collecting trough in the centre of the drum. Any material remaining after flushing is removed by a nylon brush mounted on the outside of the sieve drum.



Stable roll bearings in the Meva MDS



At the bottom of the collecting trough there is a transport screw made of highly durable special steel. The spiral in the collecting trough is equipped with a brush to ensure that even small bits of screenings are transported away. The spiral is fitted tightly in the trough for maximum transport capacity. Close to the discharge point, the screenings are washed to remove organics. The screenings are compressed for dewatering before reaching the discharge point. The unloaded material has a DS content of up to 35%. The covers on the outside of the pressing zone are fitted with hinges, allowing easy access for inspection and maintenance.

Meva Drum Sieve MDS

- Unique drum seal for maximal separation
- Unique maintenance-free bottom bearing
- Integrated screenings handling
- Easily accessible pressing zone
- Openings between 0.5 and 10 mm
- Installation in channel or tank
- Well suited for installation upstream membranes



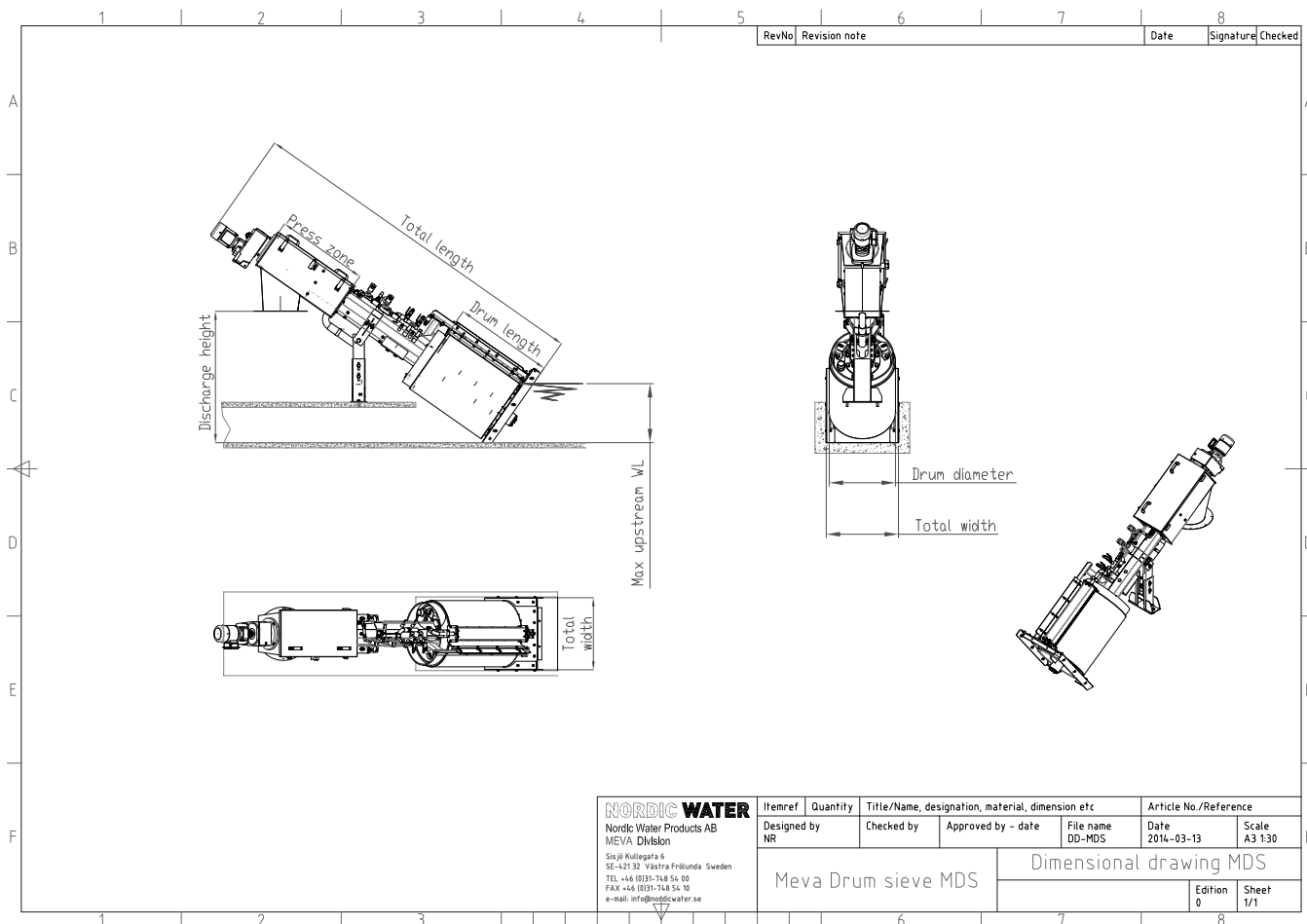
Overlapping flushing system of the Meva MDS



Easily replaced nylon brush



Technical Specification



TECHNICAL SPECIFICATIONS - MEVA MDS

Openings:	Perforated plate: 1-6 mm	Wedge wire: 0.5-10 mm	Mesh: 0.5-1 mm
Drum diameter:	600 – 3,000 mm		
Installation angle:	35°		
Max capacity:	≤ 1,400 L/s		
Material:	304 L or 316 L		